

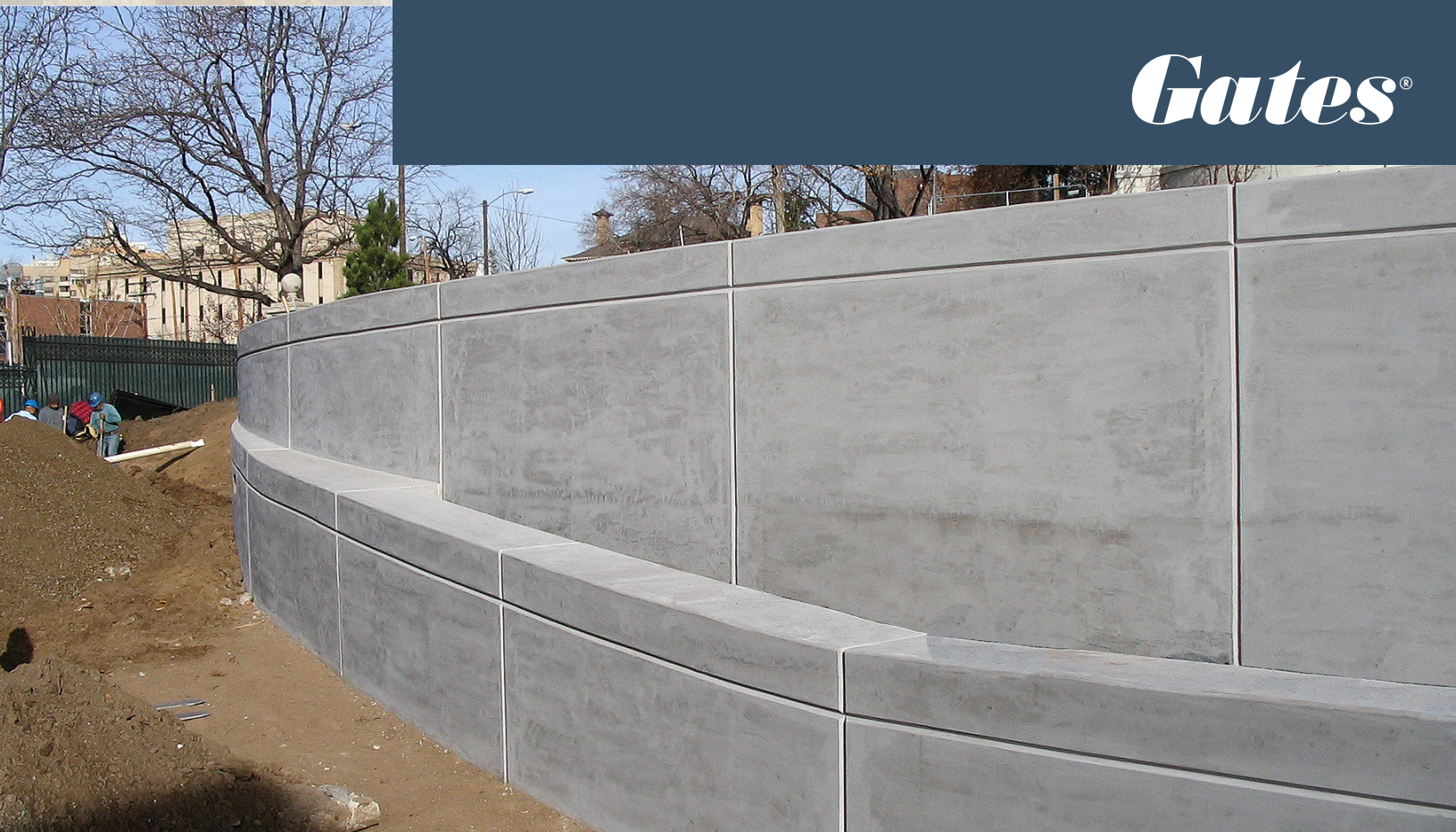


PRODUCT CATALOG

CAM-LOCK[®]

Gates' signature hand-set forming system

Gates[®]

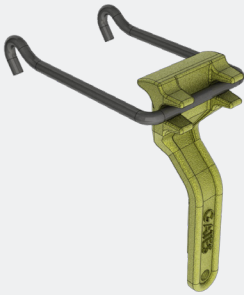




077001 (less than 400)
077008 (bulk 400 min.)

CAM-LOCK BRACKET

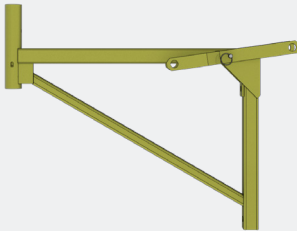
- Includes (1) Gates' Cam-Lock Bracket
- Support for dimensional 2x4 walers, has dual ears for the support of the 24" Scaffold Bracket and the Stiff-Back Clamp.
- Forged Cam-Lock claw grips the tie loop, securing it firmly to the form
- Individual and bulk pricing available



077024 (2x4)
077026 (2x6)

STIFF-BACK CLAMP

- Includes (1) Gates' Stiff-Back Clamp
- Available in 2x4 and 2x6 sizes, the Stiff-Back Clamp hooks to the ears of the Cam-Lock Bracket, aligning and holding the form rigid prior to pour
- Priced per each



078102

24" SCAFFOLD BRACKET

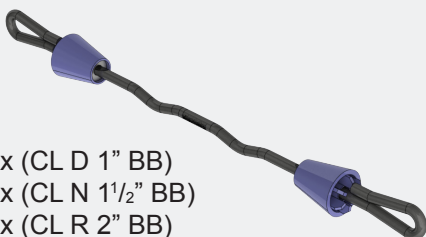
- Includes (1) scaffold bracket complete with arms and a clevis pin/ring
- Provides walkway for two 2"x12" planks
- Priced per each



078112

SAFETY RAIL POST

- Includes (1) Gates' Safety Rail Post
- 42" guard rail with toe-plate, required with the use of all Gates' Scaffold Brackets
- Priced per each



044xxx (CL D 1" BB)
054xxx (CL N 1 1/2" BB)
055xxx (CL R 2" BB)
041xxx (w/neoprene water-stop)

CAM-LOCK CONE TIES

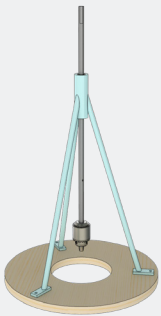
- Ties featuring a specially designed and patented self-centering cushion cone to allow for slight variation in the plywood or 2x4, and will not absorb moisture or stick to concrete
- Available in a range of break-back lengths and cone sizes, or with a neoprene water-stop feature
- Priced per 100



048xxx

CAM-LOCK G-WASHER TIE

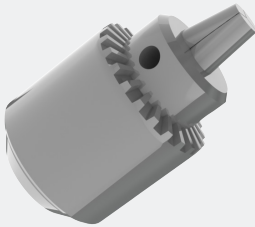
- A flush break-back tie, recommended for use when a break-back is not required
- Available in fractional sizes, or with neoprene water-stop feature
- Use of the G-Washer tie saves the grouting of holes left when cone ties are used
- Priced per 100



156009

DRILL STAND (W/SHAFT AND CHUCK)

- Gates' Drill Stand assures perfectly drilled tie or bolt holes at right angles to the panel face
- Fits any electric drill with a 1/2" chuck
- Priced per each



156010

1/2" CHUCK

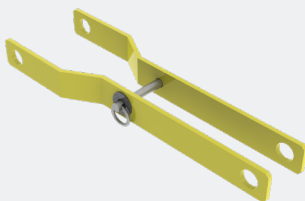
- Replacement Drill Stand chuck
- Priced per each



156011

DRILL STAND SHAFT

- Replacement drill stand shaft for Gates' Drill Stand assembly
- Priced per each



078046

SCAFFOLD BRACKET ARM SET

- Includes (2) arms, (1) clevis pin, and (1) safety ring
- Replacement part for 24" Scaffold Bracket
- Priced per set



078123

CLEVIS PIN

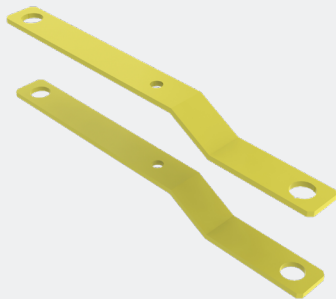
- Includes (1) clevis pin for use with Gates' Scaffold Bracket and arms
- Replacement part for Scaffold Bracket Arm Set
- Priced per each



078121

SAFETY RING

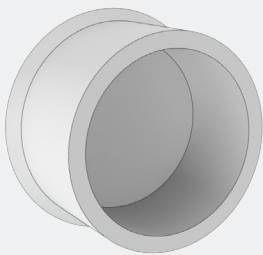
- Includes (1) Safety Ring
- Replacement part Scaffold Bracket Arm Set
- Holds clevis pin in place
- Priced per each



078122

SCAFFOLD BRACKET ARM PAIR

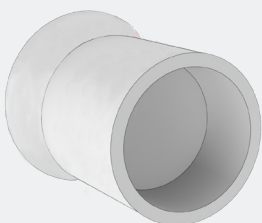
- Includes (2) arms, replacement part only
- Does NOT include clevis pin or safety ring
- Priced per pair



972006

$\frac{13}{16}$ " PLASTIC HOLE PLUGS

- Plastic hole plugs for $\frac{13}{16}$ " holes in plywood
- Leaves a smooth surface for the next use
- Priced per each



973006 (Dark Gray)
973007 (Light Gray)

CAM-LOCK D CONE HOLE PLUG

- Plastic concrete hole plug for when Cam-Lock D Cone ties are used
- Available in light or dark gray
- Priced per each



973201

CAM-LOCK D CONE CONCRETE HOLE PLUGS

- Concrete hole plug designed to fill Cam-Lock D Cone holes
- Concrete gray color, other colors available upon request
- Use only on dry concrete walls and below grade where wall is backfilled
- Priced per each



600376

TURNBUCKLE FORM BRACE

- Brace form by nailing the Turnbuckle Form Brace to dimensional lumber
- Quick, accurate method of aligning your wall prior to pouring
- Priced per each



600118

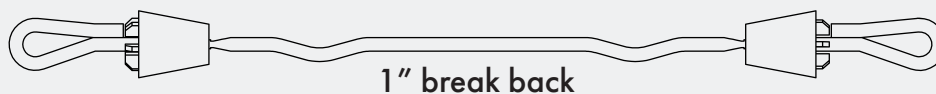
FOOTING STAKES

- Includes (1) $\frac{3}{4}$ " x 2' Footing Stakes with holes
- Priced per each

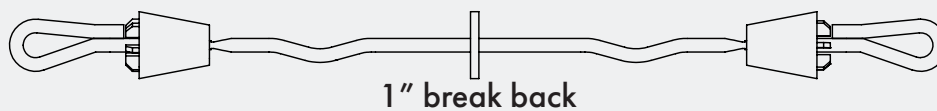
NOTES

CAM-LOCK TIES

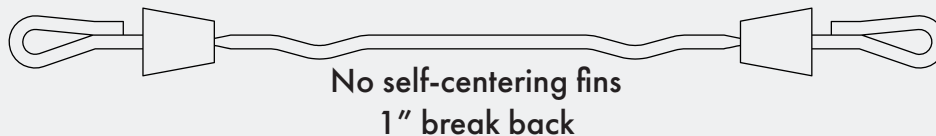
Cam-Lock "D" Cone Ties



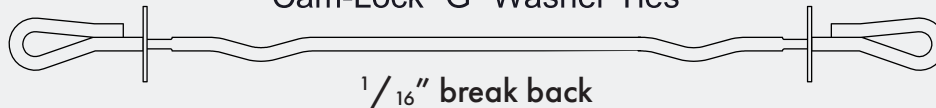
Cam-Lock "D" Cone Ties W/Neoprene Water Stop



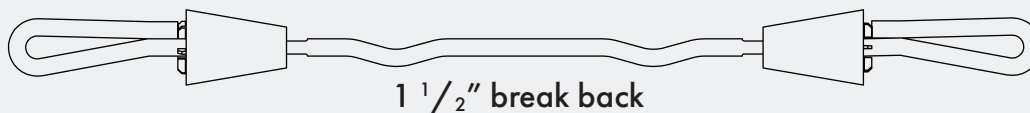
Cam-Lock "B" Cone Ties



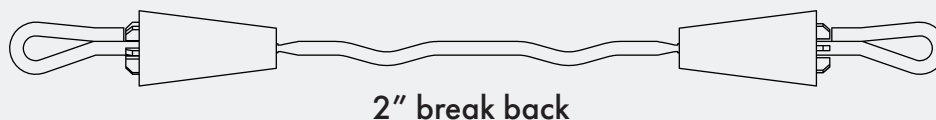
Cam-Lock "G" Washer Ties



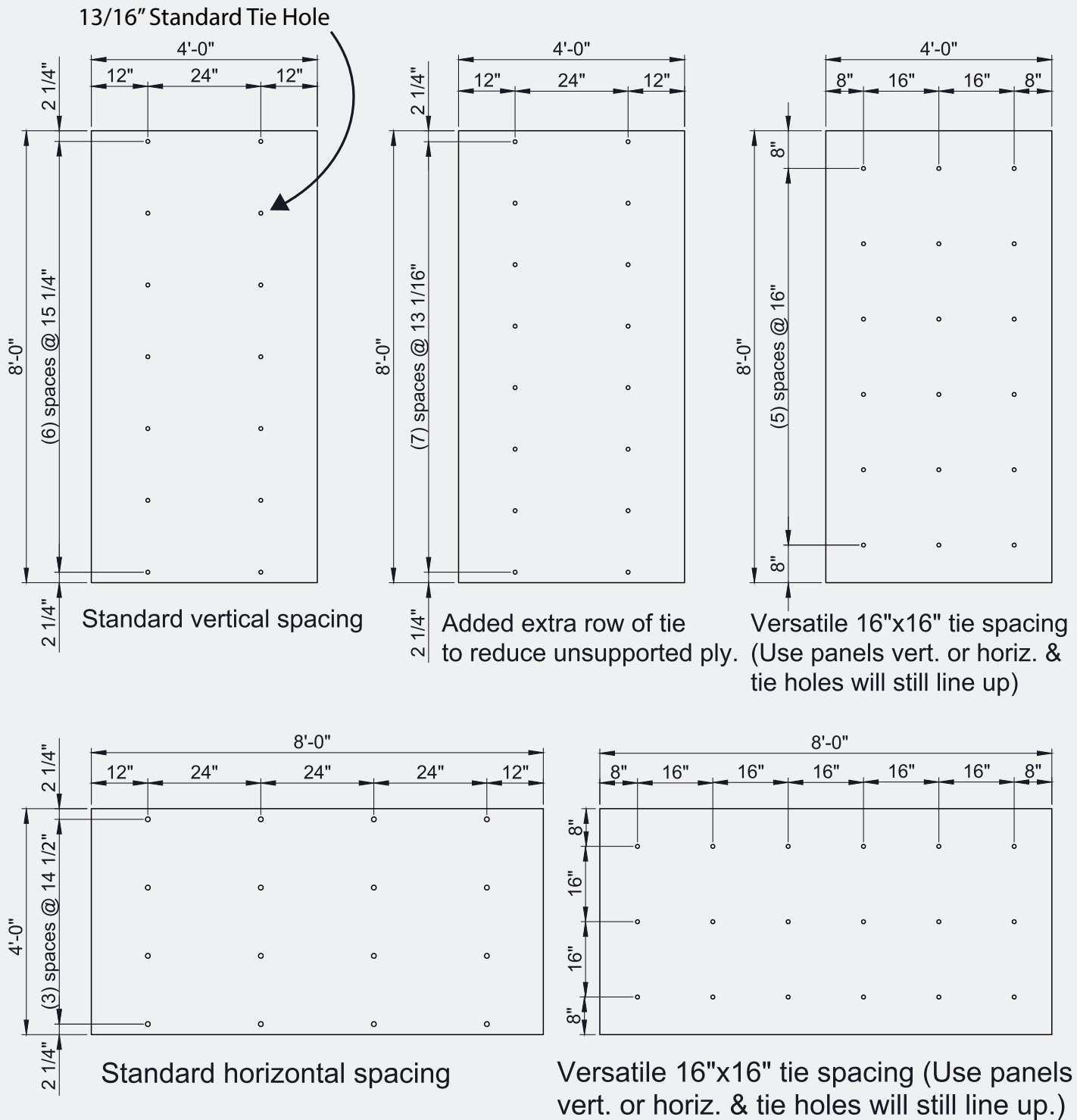
3M Cam-Lock "N" Cone Ties



Cam-Lock "R" Cone Ties



PANELS





www.gatesconcreteforms.com



1 (800) 333-8382



90 S. Fox St.
Denver, CO 80223



/GatesConcreteForms

